

JOIN THE TEAM!

We are recruiting quality individuals, 18 years and older, to work during the summer season. If you, or someone you know would like to work, please call the Family Camp Office at (408) 871-3820. Family Camp also recruits volunteers with specialized skills throughout the year.

The Friends of San Jose Family Camp is a non-profit organization dedicated to the support of Family Camp. To join, send \$10 with your name, address and phone number to:

Friends of San Jose Family Camp
881 South 10th Street,
San José, CA 95112
www.friendsofsanjosefamilycamp.org

SAN JOSE FAMILY CAMP
Parks, Recreation and
Neighborhood Services
www.sanjoseca.gov/prns/familycamp.asp

Administration and Reservations:
San Jose Family Camp Office
Moreland-West
1850 Fallbrook Avenue
San José, CA 95130
Phone 408.871.3820 • Fax 408.871.8165
Email: familycamp@sanjoseca.gov

Camp Address:
San Jose Family Camp
11401 Cherry Lake Road
Groveland, CA 95321

Reservations begin in late winter/early spring. See this year's date and rate information on the Reservation Form or call the reservation office for details at (408) 871-3820.

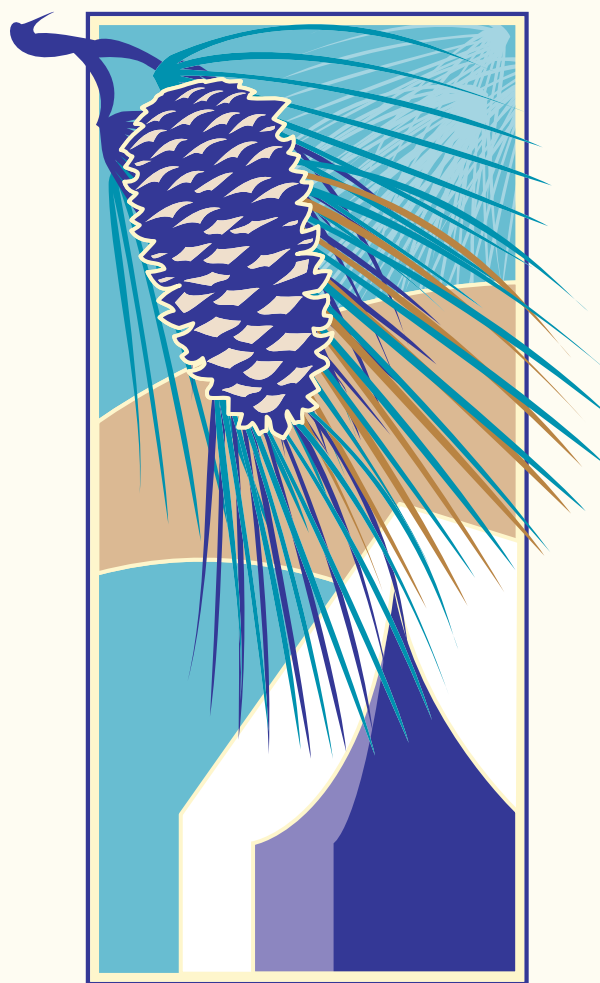
San Jose Family Camp offers a campership program, which provides a discount to low-moderate income families. Spaces are limited, please call (408) 871-3820 to inquire.

This publication can be made available in alternative formats such as larger print, computer disk, audio tape or Braille. Requests can be made by calling (408) 294-9337 (TTY).



FORTUNE2 • 1/08

SAN JOSE FAMILY CAMP



Department of Parks, Recreation
and Neighborhood Services

DISCOVER...

San Jose Family Camp is located in the heart of the Sierras just off Highway 120 near the West gate of Yosemite National Park. The Stanislaus National Forest and the Middle Fork of the Tuolumne River serve as a scenic backdrop to this mountain playground. The camp is a retreat where campers of all ages can fish, hike, swim and participate in organized programs, or just relax and take it easy. It's a great experience for the entire family!



San Jose Family Camp is a scenic 40-acre self contained campground facility with tent cabins for campers, a dining complex, a swimming area, amphitheater, campfire circles and conveniently located restroom/bath units with hot showers. The camp facilities include a softball field, archery range, horseshoe pit, playground, shuffleboard courts and a lodge for special gatherings. Limited wheelchair accessible facilities are available, advanced reservations are recommended.

The camp is open to campers generally from May to mid-October. During spring and fall, the pre- and post-seasons, camp is available for individual, family and group use. During these periods, camp is host to community organizations such as YMCA, Scouts, schools, and special interest groups. Fishermen stay and fish the river during the early fishing season.



The Family Camp summer program runs from the middle of June through the middle of August. This program is supported by a full staff, has complete meal service and a variety of structured activities. Families arrive throughout the week and stay

an average of four nights. Each family stays in their own tent-cabin. Meals are prepared by camp chefs and are served cafeteria-style in the dining hall.

FAMILY FUN



Family Camp's summer program provides an opportunity for campers to experience the excitement of sports and activities or to enjoy relaxing leisurely walks by the Middle Fork of the Tuolumne River. Family Camp offers activities and special events for all ages throughout the summer, including nature hikes, campfires, skits, talent shows, socials, special activities for children and tots, overnight campouts for older children and teens, and sports such as fishing, volleyball, softball, and ping-pong.

Interpretive activities introduce children and adults to the natural history of the Sierra foothills. Nature oriented craft programs are conducted daily. The Fort Tuolumne childcare area provides supervised fun for youngsters (not a licensed daycare), allowing adults to participate in other activities.



Sports tournaments, theme days and special events attract those who are more venture-some. Reading on the patio, board games, a dip in the pool, a quiet breakfast walk and a glance at the rings of Saturn on a

Stargazing Hike are part of a more leisurely visit to camp. A different program is presented each evening with an emphasis on old fashioned family fun.

Many families take advantage of Family Camp's ideal location to plan excursions to Yosemite and the historic gold rush towns of Columbia, Sonora and Coulterville. Trips to the Moccasin Creek Trout Hatchery and the fishing streams and lakes of the high Sierra are also popular. Other nearby attractions include hayrides, horseback riding and golf.

Upper left photo: The Middle Fork of the Tuolumne River from the dining hall bridge.

Lower left photo: Evening talent show.

Upper right photo: A great place to cool the kids off.

Lower right photo: Many places for tranquil retreats at pool.

FAMILY CAMP

YOUR MOUNTAIN PLAYGROUND

There are over 60 wood frame and canvas covered tent-cabins scattered among the pines and oaks through-out camp. Each cabin contains cots with mattresses (no bedding), benches, a table and bookshelf and can comfortably sleep up to six campers. All cabins have decks for outdoor relaxing. Electrical outlets are available at an extra cost in some cabins.

Fully equipped restrooms are just a short walk from any cabin. All restrooms have hot showers, toilets, wash basins and changing areas for infants. There are electrical outlets in all restrooms.

The Dining Hall complex is the heart of camp. Here you will find the dining room, kitchen, store, recreation room, camp office and the medical aid station. A broad, shaded patio overlooking the Tuolumne River provides the perfect spot for reading, socializing or napping. The Dining Hall deck is the setting for many of the summer's social activities.

Upstream from the Dining Hall a small dam creates a swimming area in the river. Lifeguards are on duty during all scheduled swimming hours, and there is a roped-off shallow area for small children and beginning swimmers. For sun lovers there are beach and lawn areas for recreation or lounging.

Across the river from the Dining Hall complex is Miners Island and Fort Tuolumne. Both are favorites with the younger campers. Miners Island is an island where young campers can play. At the Fort Tuolumne playground (not a licensed daycare) you'll find supervised child-care and special activities for the young campers.



rides and the relaxing sound of its water tumbling over rocks as it flows through camp.

In other areas of the camp you will find a volleyball court, baseball diamond, basketball court, fish cleaning station, amphitheatre and, of course, the river. The river provides shaded beaches, cool dark trout pools, exciting raft

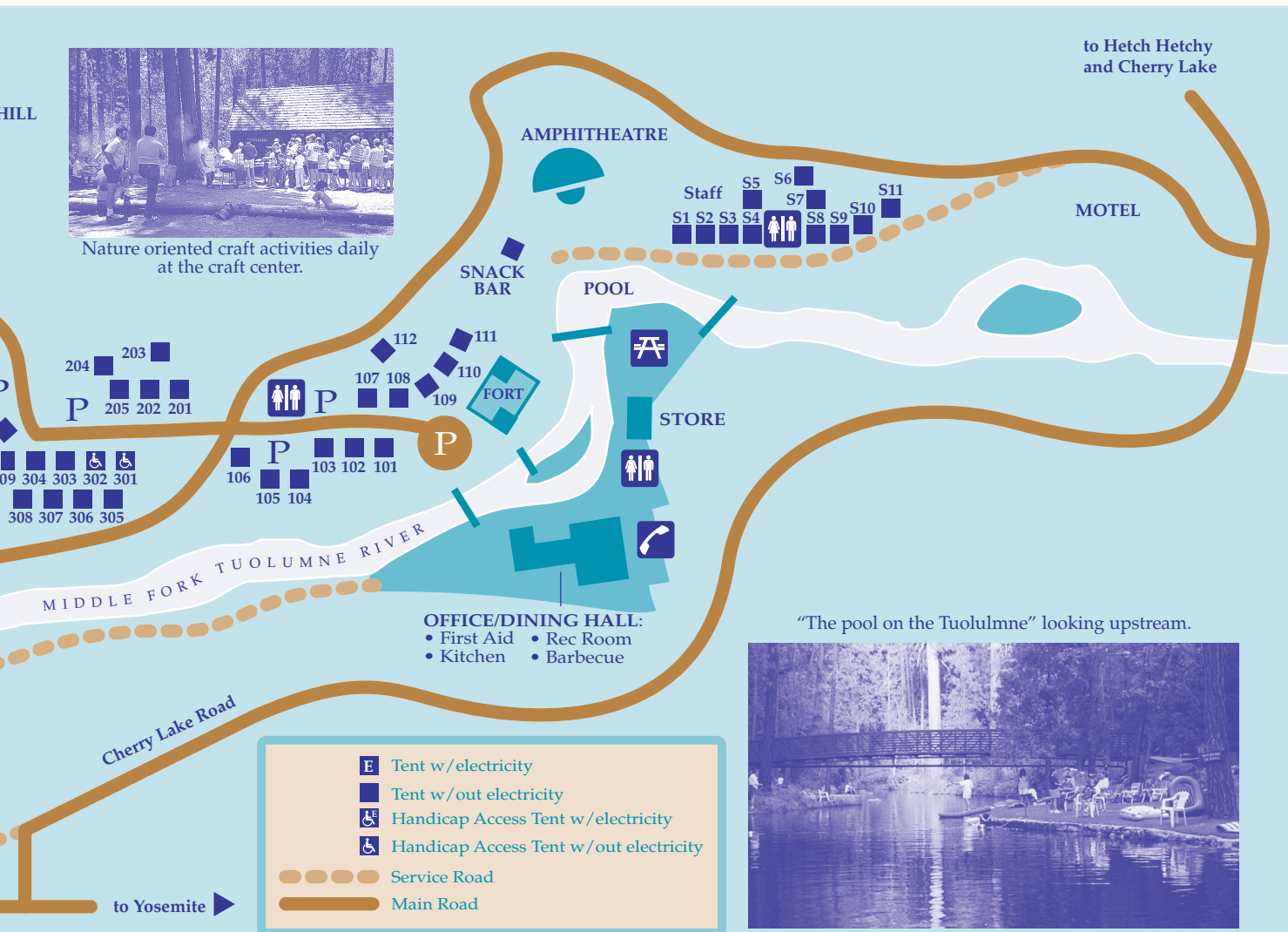


Creekwalk adventures.





Nature oriented craft activities daily at the craft center.



"The pool on the Tuolumne" looking upstream.

